



Product catalogue

Intelligent solutions for SMEs



Simons  Voss



Keyless locking is a conscience decision for greater convenience and security.

Locking and unlocking cars with electronic remote control keys has long been standard practice. With MobileKey from SimonsVoss, you can now apply this principle to doors.

Specifically designed for small and medium-sized companies, this innovation provides you with state-of-the-art technology. In MobileKey systems, a digital transponder, a PIN code keypad or your smartphone replace the trusty key. You use electronic door cylinders instead of mechanical ones. You can fit them easily yourself in minutes with no cabling or drilling required. You configure the system with the help of a free web app and your new locking system is then ready to use!

This well-designed, all-inclusive solution is suitable for up to 20 doors and 100 users. The MobileKey system is extremely affordable and is also inexpensive to run.

MobileKey is the latest newly developed product from SimonsVoss. Based near Munich, the company is a world technology leader in electronic locking and access control systems.

Digital transponders and door cylinders instead of mechanical keys and locks. The future of locking is coming to you.

With MobileKey, perfect access control is just a few clicks away. Web-based, obviously.

01. Web app

MobileKey is set up and managed using an app. The app can be run on all internet-ready devices such as PCs, tablet PCs, Macs or smartphones. Just a few clicks and you can specify who has which access authorisations. Simple as that and change them whenever you like.

02. SimonsVoss server

The web app data are transmitted to the SimonsVoss server, where they are applied as a locking plan and then sent back to the web app. Everything is automatic – you don't need to do a thing.

03. Basic version

The config device allows you to transfer data to your transponders and locking components. Your system is now ready for use.

04. Optional: online extension*

In the online version, your networked locking components connect directly with the server via a SmartBridge. This ensures system equipment and authorisation changes are implemented almost in real time. Full control anywhere at any time.

05. Remote control key as an ID medium

Unlock without mechanical keys using a transponder, PinCode keypad or smartphone. It's that simple for you to change to the digital way of locking.

06. Locking components

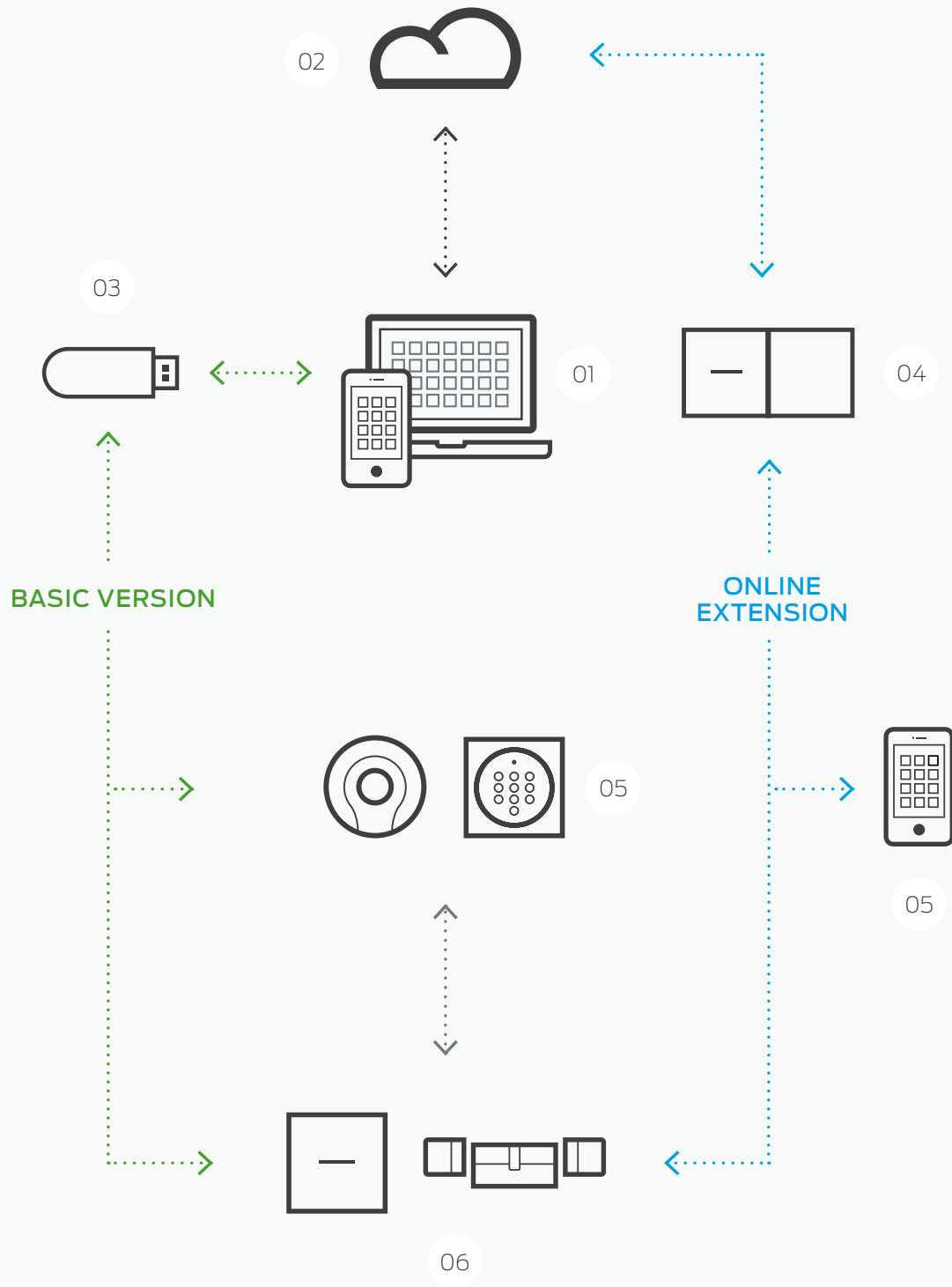
Press the button and your wireless key transmits individual stored authorisations to the digital cylinders or a specially designed relay. Doors and gates will then open if the authorisation is valid.

Security takes top priority

Your data is stored on an audited SimonsVoss server in Munich, Germany. No need to worry about data security and data management: we will do it for you to the strictest of standards.

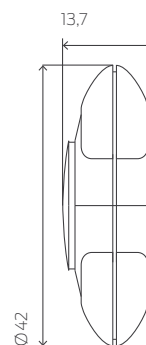
More information at:

www.my-mobilekey.com



Transponders MobileKey

The transponder serves as an electronic key in the MobileKey system. Equipped with a high-performance battery, the transponder can activate up to 400,000 locking and unlocking procedures. The digital “key” contacts the electronic locking cylinder wirelessly. It will only activate if the authorisation is valid. If lost, the transponder can be disabled instantly – a new one can be configured as required at the click of the mouse.



Measurements indicated in mm

Technical specifications

- ⚡ Housing made of black polyamide
- ⚡ Dimensions: 42 x 13.7 mm (Ø x H)
- ⚡ Protection rating: IP 65
- ⚡ Typical read range: up to 40 cm to the locking cylinder
- ⚡ Battery type: 1 x CR2032, 3 V, lithium
- ⚡ Battery life:
 - up to 400,000 activations or up to ten years on stand-by
- ⚡ Temperature range: -25 °C to +65 °C
- ⚡ Environmental class: III
- ⚡ You can manage up to 20 locking cylinders and up to 100 transponders in MobileKey System.
- ⚡ Physical access list with up to 1,000 storable access events

Description

Order code

Transponder MobileKey with blue button

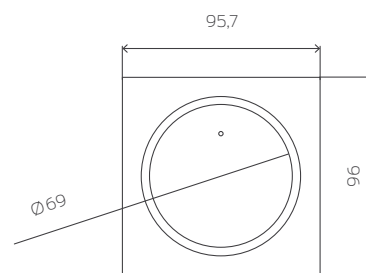
MK.TRA2.G2

Switching transponder with 2 connection wires to activate it via an isolated contact

TRA2.G2.SCHALT

PinCode keypad MobileKey

Open your doors with a 4- to 8-digit code. You can fit the ultra-slim PIN code keypad indoors or outdoors without any cabling and even mount it on glass. Save time and costs when events such as seminars and evening meetings, for example, by issuing a special code for the entrance door.



Measurements indicated in mm

Technical specifications

- ❑ Silver-coloured ABS plastic housing
- ❑ Dimensions: 96 x 95.7 x 14 mm (H x W x D)
- ❑ Weight: about 100 g including batteries
- ❑ Protection rating: IP 65
- ❑ Typical read range: up to 40 cm to the locking cylinder/SmartHandle; up to 120 cm to SmartRelay
- ❑ Battery type: 2 x CR2032, 3V, lithium

- ❑ Battery life: up to 100,000 activations or up to ten years on stand-by
- ❑ 2-level battery warning system
- ❑ Temperature range: -25 °C to +65 °C
- ❑ Manipulation alarm
- ❑ Number of keypad users: 3 different PINs
- ❑ Cable-free surface mount

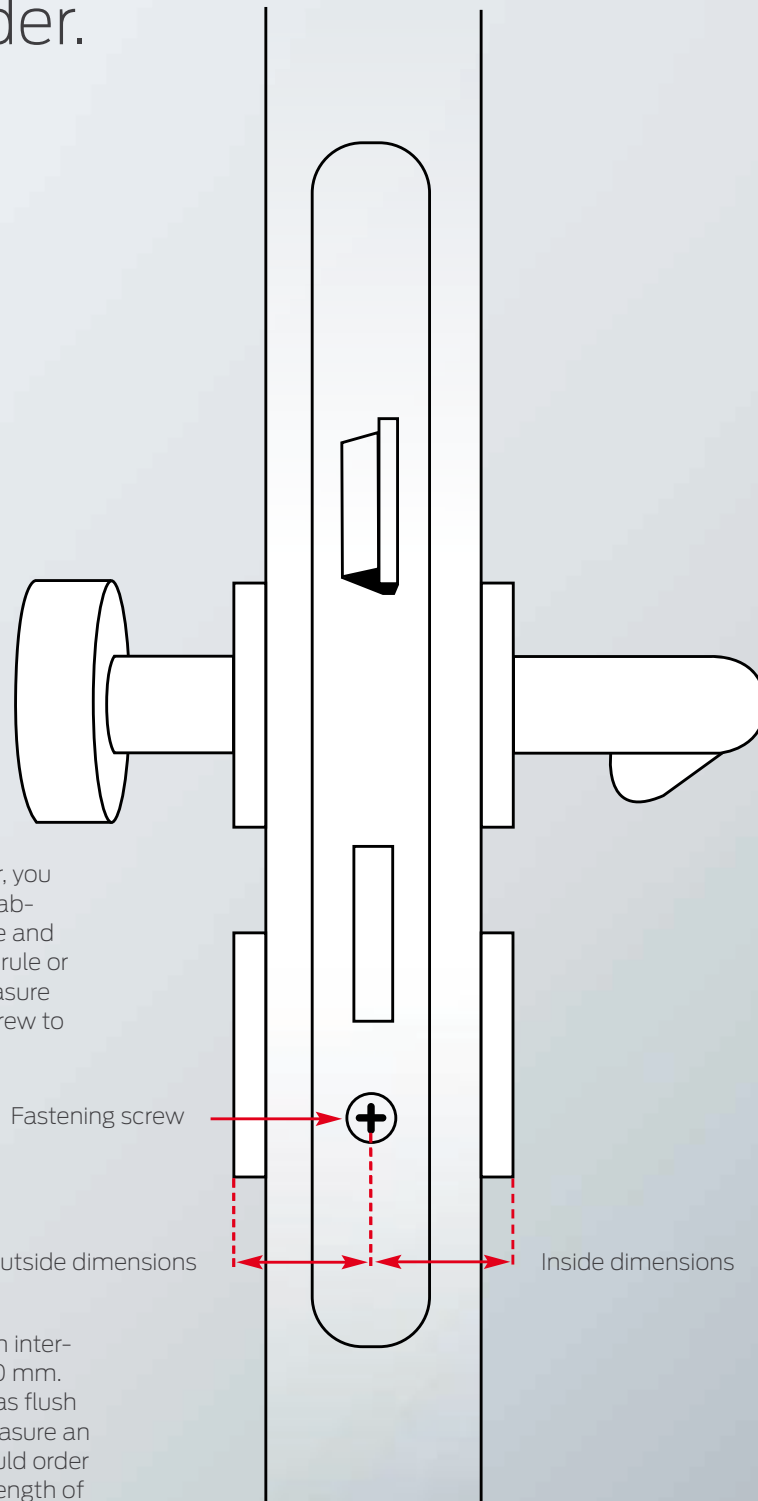
Description

PinCode keypad MobileKey*

Order code

MK.TRA.PINCODE

Measure and select the right locking cylinder.



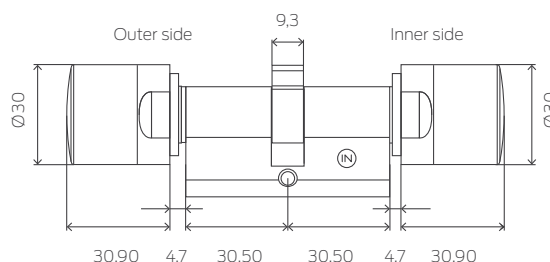
Before ordering the locking cylinder, you need to take measurements to establish the required cylinder size. Inside and outside dimensions are required. A rule or measuring template is used to measure from the centre of the fastening screw to the end of the inlay.

The cylinders are available in length intervals of 5 mm, for example, 35 or 40 mm. The cylinder housing should close as flush as possible. For example, if you measure an external length of 38 mm, you should order a locking cylinder with an outside length of 40 mm.

If the external dimension is 40 mm and the inside dimension 35 mm, these measurements become part of the order code: MK.Z4.40-35.FD.FH.ZK.G2.

Digital Euro Profile Double Thumb-turn Cylinder MobileKey

The locking cylinder – your digital lock. Fast, cable-free installation with no drilling, a beautifully shaped design: the digital locking cylinder can perform up to 300,000 locking operations thanks to the integrated battery.



Measurements indicated in mm

Technical specifications

- ⚡ Standard Euro Profile cylinder as per DIN 18252 / EN 1303 / DIN EN 15684, stainless steel design, freely rotating on both sides
- ⚡ Thumb-turn diameter: 30 mm
- ⚡ Basis installation length: 30 – 30 mm (outer/inside dimension)
- ⚡ Overall length: up to max. 140 mm (max. 90 mm on one side)
- ⚡ Protection rating: IP 54; weatherproof version: IP 66
- ⚡ Battery type: 2 x lithium, CR2450, 3 V
- ⚡ Battery life: up to 300,000 locking operations or up to ten years on standby
- ⚡ Temperature range: Operational: -25 °C to +65 °C
In storage: -35 °C to +50 °C
- ⚡ 500 access events can be logged

Product versions

Digital Euro Profile Double Thumb-turn Cylinder MobileKey – FD
freely rotating on both sides; with access control; time zone control
and logging; stainless steel design
Version with integrated LockNode for networking*

Multi-point version for use in doors with multi-point locks;
installation length 35 – 30 mm and above
Version integrated LockNode for networking*

Weatherproof version; protection rating: IP 66;
installation length 30 – 35 mm and above,
Version with integrated LockNode for networking*

Digital Euro Profile Double Thumb-turn Cylinder MobileKey – DoorMonitoring*
compact door monitoring; installation length 30-35 mm and above;
freely rotating on both sides, LockNode integrated for networking;
with access control, time zone control and event logging

Intelligent fastening screw with sensors for use with the DoorMonitoring
cylinder. You need to know the backset to order the fastening screw.
Available in 5 mm increments, from 25 mm to max. 70 mm.

Order code

MK.Z4.ee-ii.FD.FH.ZK.G2

MK.Z4.ee-ii.FD.FH.LN.ZK.G2

MK.Z4.ee-ii.FD.MR.FH.ZK.G2

MK.Z4.ee-ii.FD.MR.FH.LN.ZK.G2

MK.Z4.ee-ii.FD.WP.FH.ZK.G2

MK.Z4.ee-ii.FD.WP.FH.LN.ZK.G2

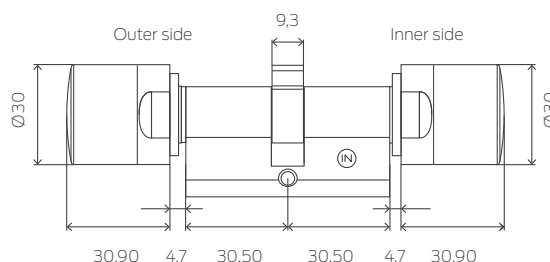
MK.Z4.ee-ii.DM.FD.FH.ZK.G2

Z4.DM.xx.SCREW

* Available from Q3/2016

Digital Euro Profile Double Thumb-turn Cylinder MobileKey – Button control

The same as the standard cylinder but with added button control, thus allowing the inner side to be opened without a transponder.



Measurements indicated in mm

Technical specifications

- ⌘ Standard Euro Profile cylinder as per DIN 18252 / EN 1303 / DIN EN 15684
- ⌘ Thumb-turn diameter: 30 mm
- ⌘ Basic installation length: 30 – 30 mm (outer/inside dimension)
- ⌘ Overall length: up to max. 140 mm (max. 90 mm on one side)
- ⌘ Protection rating: IP 54
- ⌘ Battery type: 2 x lithium, CR2450, 3 V
- ⌘ Battery life: up to 300,000 locking operations or up to ten years on standby
- ⌘ Temperature range: Operational: -25 °C to +65 °C
In storage: -35 °C to +50 °C
- ⌘ 500 access events can be logged

Product versions

Digital Euro Profile Double Thumb-turn Cylinder MobileKey – Button control
freely rotating on both sides; can be operated from inside without transponder; stainless steel design
Version with integrated LockNode for networking*

Order code

MK.Z4.ee-ii.FD.TS.FH.ZK.G2

MK.Z4.ee-ii.FD.TS.FH.LN.ZK.G2

Multi-point version for use in doors with multi-point locks;
installation length 35 – 30 mm and above
Version with integrated LockNode for networking*

MK.Z4.ee-ii.FD.TS.MR.FH.ZK.G2

MK.Z4.ee-ii.FD.TS.MR.FH.LN.ZK.G2

Digital Euro Profile Double Thumb-turn Cylinder MobileKey – DoorMonitoring*
compact door monitoring; with button control; installation length 30 – 35 mm and above; freely rotating on both sides; integrated LockNode for networking; with access control, time zone control and logging

MK.Z4.ee-ii.DM.FD.TS.FH.ZK.G2

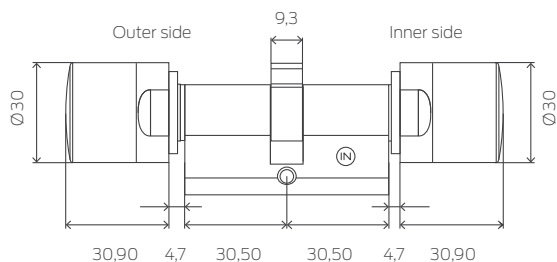
Intelligent fastening screw with sensors for use with the DoorMonitoring cylinder. You need to know the backset to order the fastening screw. It can be ordered in 5 mm increments between 25 mm and 70 mm.

Z4.DM.xx.SCREW

Digital Euro Profile Double Thumb-turn Cylinder MobileKey – Comfort



Cylinder in Comfort Version.



Measurements indicated in mm

Technical specifications

- ⚡ Standard Euro Profile cylinder as per DIN 18252 / EN 1303 / DIN EN 15684
- ⚡ Thumb-turn diameter: 30 mm
- ⚡ Basic installation length: 30 – 30 mm (outer/inside dimension)
- ⚡ Overall length: up to max. 140 mm (max. 90 mm on one side)
- ⚡ Protection rating: IP 54
- ⚡ Battery type: 2 x lithium, CR2450, 3 V
- ⚡ Battery life: up to 300,000 locking operations or up to ten years on standby
- ⚡ Temperature range: Operational: -25 °C to +65 °C
In storage: -35 °C to +50 °C
- ⚡ 500 access events can be logged

Product versions

Digital Euro Profile Double Thumb-turn Cylinder MobileKey – Comfort non-electronics side is permanently engaged, so can be opened from the inside without transponder, stainless steel design*
Version with integrated LockNode for networking**

Weatherproof version; protection rating: IP 66; installation length 35 – 30 mm and above*
Version with integrated LockNode for networking**

Order code

MK.Z4.ee-ii.CO.ZK.G2

MK.Z4.ee-ii.CO.LN.ZK.G2

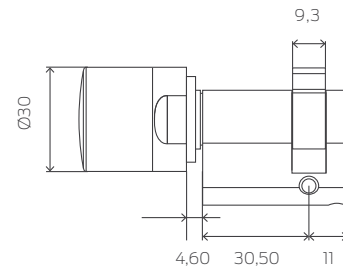
MK.Z4.ee-ii.CO.WP.ZK.G2

MK.Z4.ee-ii.CO.WP.LN.ZK.G2

* Available from Q2/2016
** Available from Q3/2016

Digital Euro Profile Half cylinder MobileKey

You can acquire the digital locking cylinder in a wide variety of versions, including a half cylinder. It offers you a solution for all door installation types in outdoor areas, such as in garage doors or key switches.



Measurements indicated in mm

Technical specifications

- ⚡ Standard Euro Profile cylinder as per DIN 18252 / EN 1303 / DIN EN 15684
- ⚡ Thumb-turn diameter: 30 mm
- ⚡ Basic installation length: 30 – 30 mm (outer/inside dimension)
- ⚡ Overall length: up to max. 140 mm (max. 90 mm on one side)
- ⚡ Protection rating: IP 66
- ⚡ Battery type: 2 x lithium, CR2450, 3 V
- ⚡ Battery life: up to 300,000 locking operations or up to ten years on standby
- ⚡ Temperature range: Operational: -25 °C to +65 °C
In storage: -35 °C to +50 °C
- ⚡ 500 access events can be logged

Product versions

Order code

Digital Euro Profile half cylinder MobileKey, weatherproof version; protection rating: IP 66 (Thumb-turn); Thumb-turn cannot be detached; stainless steel design
Version with integrated LockNode for networking*

MK.Z4.ee-10.HZ.WP.ZK.G2

MK.Z4.ee-10.HZ.WP.LN.ZK.G2

Multi-point design; detachable Thumb-turn; weatherproof version; Protection rating: IP 66 (Thumb-turn)
Version with integrated LockNode for networking*

MK.Z4.ee-10.HZ.MR.WP.ZK.G2

MK.Z4.ee-10.HZ.MR.WP.LN.ZK.G2

Digital SmartRelay MobileKey

The Digital SmartRelay acts as an access control reader or key switch. In the MobileKey system, it opens electrically opened doors, gates and barriers and switches lighting, heating and machines.



Technical specifications

- ❑ Housing made of white polyamide 6.6
Dimensions: 78 x 78 x 19 mm (HxWxD)
- ❑ Housing made of black plastic (polyamide 6.6)
Dimensions: 55.4 x 71.8 x 25.1 mm (HxWxD)
- ❑ Protection rating: IP 20, not suitable for unprotected use outdoors
- ❑ Typical read range: up to 120 cm
- ❑ Temperature range: Operational: -22 °C to +55 °C
- ❑ Air humidity: < 95 % without condensation
- ❑ Circuit board dimensions: 50 x 50 x 14 mm (HxWxD)
- ❑ Mains voltage: 12 V AC (for SREL only) or 5-24 V DC (no reverse polarity protection)
- ❑ Power limitation: mains adapter must be limited to 15 VA
- ❑ Standby current: < 5 mA
- ❑ Max. current: < 100 mA
- ❑ Pulse duration can be programmed between 0.1 and 25.5 sec.

Product versions

Digital SmartRelay MobileKey in white design housing for surface mount; with access control, time zone management and events logging; no connection for external antenna.
Version with integrated LockNode suitable for networking*

Digital SmartRelay MobileKey in black housing also suitable for flush-fit; with access control, time zone control and event logging; connection possible for external antenna.

Technical specifications for output relay

- ❑ Type: changeover contact; in SREL2: NO contact
- ❑ Continuous current: max. 1.0 A
- ❑ Switch-on current: max. 2.0 A
- ❑ Switching voltage: max. 24 V
- ❑ Switching power: 10⁶ activations at 24 VA
- ❑ Multi-function connections F1, F2, F3: max. 24 V DC, max. 50 mA
- ❑ Vibrations: 15 G for 11 ms, 6 shocks in accordance with IEC 68-2-27; not approved for use when subject to permanent vibrations

Order code

MK.SREL2.ZK.G2.W

MK.SREL2.LN.ZK.G2.W

MK.SREL.ZK.G2

USB programming device MobileKey

The small, compact USB programming device allows operators of small and extremely small lock systems to have absolute control over their lock system. It enables them to create a locking system, programme components and manage access authorisations. The USB programming device is provided together with an easy-to-use MobileKey web application.



Technical specifications

- ❑ Programming: SimonsVoss 25 kHz technology
- ❑ Operating system: Windows 7 and higher
- ❑ USB port: USB type A (same as a flash memory)/USB 2.0
- ❑ Power supply: USB connector
- ❑ Dimensions: 57 (70) x 19 x 13 mm (LxWxH)
- ❑ Programming distance: 10 – 30 cm
- ❑ Protection rating: IP 40
- ❑ Temperature range: -10 °C to +60 °C
- ❑ Humidity: 95% (non-condensing)

Product versions

USB programming device to programme MobileKey products. Connection to a PC via USB port in conjunction with MobileKey web application

Order code

MK.CD.STARTER.G2

Kits with the complete MobileKey range

We also offer MobileKey components in affordable starter kits for new users.



MobileKey Starter Set 1

Consisting of 3 transponders (MK.TRA2.G2) and 1 USB config device (MK.CD.STARTER.G2)

Order code

MK.SET1

MobileKey Starter Set 2*

Consisting of 3 transponders (MK.TRA2.G2) 1 PinCode keypad* (MK.TRA .PINCODE) and 1 USB config device (MK.CD.STARTER.G2)

Order code

MK.SET2

Online extension MobileKey

In the online version, your digital locking cylinder is directly connected to the server via a SmartBridge. This allows you to install system equipment and make changes to authorisations almost in real time. Full control anywhere at any time.



Technical specifications

- ⚡ Housing made of ABS plastic. UV-stable; colour: 9/118645, same as RAL 9016 (Traffic white)
- ⚡ Dimensions: 172 x 86 x 33 mm (L x W x H)
- ⚡ Radio frequency: 868.xx – 870 MHz
- ⚡ Output: max. 3 VA
- ⚡ Radio module transmission power: 10 dBm (6.3 mW) to the antenna socket
- ⚡ External power supply: regulated mains adapter 9-24 V DC: MK.SMARTBRIDGE.ER also PoE-capable (802.3af)

Product versions

Order code

MobileKey SmartBridge* to network MobileKey locking devices with the SimonsVoss server. Ethernet design to connect with a network node

MK.SMARTBRIDGE.ER

MobileKey SmartBridge* to network MobileKey locking devices with the SimonsVoss server. WLAN design to connect with a network node

MK.SMARTBRIDGE.WR

TIME SCHEDULE

DAILY WEEKLY

MON TUE WED THU FRI SAT SUN

FROM 09:00 TO 18:00

+ Create time interval

SAVE

←
BACK

What goes with it

Description	Order code
Intelligent fastening screw with sensors for use with the DoorMonitoring cylinder. IMPORTANT: you need to know the backset to order the intelligent fastening screw. Available in 5 mm increments, from 25 mm to max. 70 mm.	Z4.DM.xx.SCREW
Special mounting screwdriver for DoorMonitoring	Z4.DM.SCREWDRIWER
Installation/battery key: Special tool for disassembly and battery replacement (button cells) in TN4 cylinders (double knob cylinders and half cylinders)	Z4.SCHLUESSEL
Core protection adapter for all freely-rotating TN4 double knob cylinders; 8 mm extension	Z4.KA
5 batteries for MobileKey transponder (type: CR2032)	TRA.BAT
10 batteries for MobileKey cylinders (double knob and half cylinders) (type: CR2450)	Z4.BAT.SET
Battery for SmartRelay in black housing (MK.SREL.ZK.G2), for operating without external power supply (e.g. as door strike), Battery type: lithium 1/2 AA	SREL.BAT
External antenna for connecting Smart Relay; cable 5 m long	SREL.AV
External plug-in power supply for SmartBridge	WN.POWER.SUPPLY.PPP
MobileKey Network Knob Cover as a replacement part for networking cylinders directly	MK.LN.I
MobileKey network circuit board as a replacement part for networking SmartRelay directly	MK.LN.I.SREL2.G2
Empty sample box (aluminium box 327 x 200 x 54) for 1 cylinder in installtion length 35 – 35 mm, 2 transponders, 1 PinCode keypad, 1 USB config device	MK.KOFFER.SMALL.U



A bespoke locking system in just a few steps.

01. Establish what components are required

First, define your group of users and thus establish the number of ID media required. Then specify how many doors you wish to fit with locking components. Next indicate the locking cylinder lengths and functions.

02. Create the locking plan on my-mobilekey.com

Register on my-mobilekey.com to activate your user account. You will then have access to the locking plan on all your Internet-ready devices. Now use the set-up agent to create the locking plan and enter component identifiers and characteristics. You can add more keys and locks whenever you like.

03. Programme the components

You can start programming as soon as the individual components have been added and the access rights for the locking components have been issued. You can use the config device to complete the programming tasks directly in the browser on any Windows computer.

04. Fit the components

Once the programming process is complete, you fit the locking cylinders and also SmartRelays to activate barriers, garage doors and other such installations.

05. A short functions test and you are finished!

After a short functions test using a transponder, the electronic lock system is ready for operation! You can change authorisations and extend your system whenever you like.

SimonsVoss Technologies GmbH
Feringastrasse 4
85774 Unterföhring
Germany
Tel. +49 89 99228-0
Fax +49 89 99228-222
info@simons-voss.com
www.simons-voss.com

www.my-mobilekey.com

Simons  Voss
technologies

© Copyright 2015, SimonsVoss Technologies GmbH, Unterföhring, Germany
All rights are reserved. Text, images and diagrams are protected under copyright law. The contents of this brochure must not be copied, distributed or modified. You can find authoritative, detailed technical information in the system manual. Subject to technical changes. SimonsVoss and MobileKey are registered brands belonging SimonsVoss Technologies GmbH.

About Allegion™

Allegion (NYSE: Allegion (NYSE: ALLE) is a global pioneer in safety and security, with leading brands like CISA®, Interflex®, LCN®, Schlage® and Von Duprin®. Focusing on security around the door and adjacent areas, Allegion offers a wide spectrum of solutions for private households, companies, schools and other facilities. Allegion generated 2 billion US dollars in revenue and sells its products in about 130 countries around the world. For more information, visit www.allegion.com.



ALLEGION™